



Correct Application & Installation

of

Apex Auto Shield Smash & Grab Film



Ford Custom (Tourneo / Transit) V710

Apex Auto Shield (Pty) LTD

www.apexautosshield.co.za | info@apexautosshield.co.za | +27 (0) 21 934 5725

Pre-Fitment Preparation:

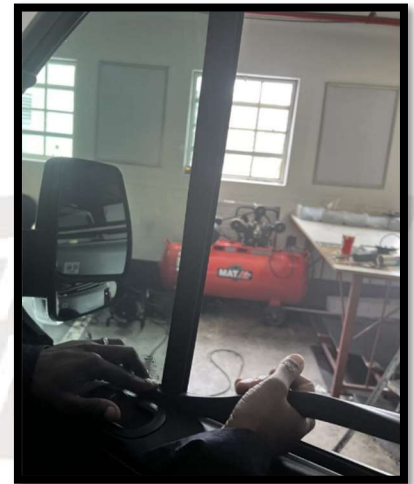
1. Patterning of the Film:

The use of templates to cut safety film patterns can improve the ease of patterning this can also cause problems should the pattern not be correctly cut. It's recommended that after pre-cutting the film the film is applied to the outside of the window. A few things to look for here are to ensure that the film does not extend too far below the inner gasket once the film is installed and to finish the top edge. Cutting the top edge to finish quality now is almost a requirement on 125- and 150-micron films as trimming after installation is very difficult; an advanced technique, common for films thinner than 100 micron, is to leave this edge slightly longer (4mm) and trim this off after installation. While the film is on the outside if any moulding is needed for the film to form to the window it should be done now; spending a few seconds to do this on the outside can save mins on the inside.



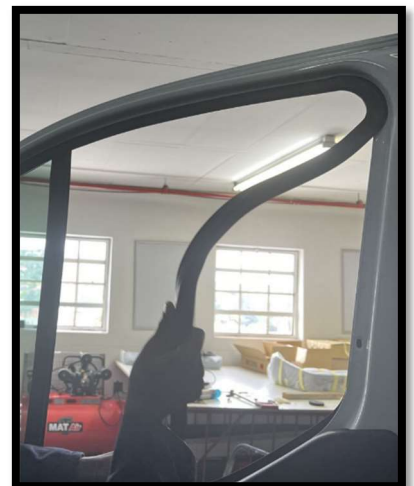
2. Remove the rubbers:

Remove the bottom door panel rubbers. If they are dirty, clean them with soap water. Ensure that there is enough of a gap to place 50mm of the safety film under the rubber edge once wound up. The closer that you can fit the film to the winding mechanising, the safer the customer will be.



3. Door Panels: Do not remove any!

After the rubbers are removed, there will be no need to remove the door panels because there will be enough space to apply the film.



4. Clean the Glass:

Probably the most important step in any window film installation is to ensure that the surrounding frame area and the glass surface is very clean. This is to eliminate contaminants or other small particles of dust from the surface of the glass that could lead to visible defects once the film dries out. If you follow this routine before every installation, you can be sure of achieving professional results each time. Use sodium free slip solutions to clean the glass (e.g. Apex Tint-On or Johnsons Baby Shampoo).



5. Scrape the Glass:

Using a razor blade, carefully scrape all glass areas with a downward pushing motion. You should make your passes at the top and sides at first; this will allow any dust or water to naturally flow down the window.



6. Scrub the Glass and Side Gaskets:

Wet the glass as in step 1 and using a white scrubby pad clean the side gaskets and centre glass area free of any excess dirt.

7. Towel the Edges:

In preparation for the final cleaning remove remaining contaminants from the top edge of the glass and the gasket/frame areas with a paper towel.



8. Final Squeegee:

Lightly spray the glass again with your mounting solution and use a smooth, flexible squeegee to clean the glass carefully and completely. Using a motion that does not require lifting the tool from the surface of the glass will provide best results.

This can be done by squeegeeing down the back edge, then the front, and then the remaining centre from the top down, overlapping passes will insure complete coverage and a clean glass. This will provide you with a cleaner surface to work with. Repeat this as required until you feel the glass is clean.



NOTE: When wetting the glass, the spray can be directed down or off to the sides of the glass toward the edges, this will further improve the overall cleanliness of the window.

Physical Installation:

9. Removing the Liner / Backing Sheet:

When removing the liner (or backing sheet), completely wet the adhesive with your slip solution. This temporarily deactivates the adhesive allowing for easier positioning. Ensure that the rubbers / inner gaskets are removed and that the door panels are positioned correctly. Place waterproofs over any electronic components to alleviate water damage.



10. Spray the Glass:

Completely wet the interior window surface so that it has no dry spots to which the adhesive could stick to while you are positioning the film. If the film does stick, the adhesive can become distorted requiring the film to be replaced. If more positioning (slip) is needed add more slip solution, but only enough to allow positioning.



11. Position the Film:

Carefully place the film on the wet window surface and slide the film below the gasket. In most cases this is easier to put the small side in first then the longer edge. Once the film is completely on the glass, position the film with either the top edge lined up or hanging over slightly based on how the door was patterned.

**IMPORTANT NOTE:* If you have to hit the film with your hand to move the film into position you need more soap!



12. Tack the Film:

Once the film is placed on the glass, evenly spray the film's surface with solution. Spraying acts as a lubricant protecting the film from squeegee scratches. The first squeegee passes are to tack the film to the glass. Using a hard rubber "Blue Max" or a "Slammer" squeegee with a handle, start at the centre and press firmly across the top edge to the sides using slow but forceful pressure. If the film is still not sticking, you can apply heat to this area with the heat gun, use only enough heat to set film.



13. Top half of window & Trimming:

The last thing that needs to be done is to remove any excess water from the windows edges. Using a hard card wrapped in a dry paper towel will ensure that any moisture pushed out from the film's edge is absorbed, rather than drawn back behind the film.



14. Squeegee the Top Half of the Window:

Starting at the top and centre, push the squeegee (slow firm passes) down the centre about halfway down. Once again, hold the film in place with free hand making sure the film is not moving. Work from the top downward in a systematic pattern that pushes and fingers to the bottom corners, remember to push, not pull the squeegee. Pulling the squeegee across the film results in less solution being removed and risks the film moving or creasing.



15. Squeegee the Lower Half of the Window:

Roll the window up. Before beginning the lower set of squeegee passes, spray the outside surface of the film again. Starting in the centre, squeegee down and towards the lower corners, again concentrate on slow firm overlapping squeegee passes. Pushing towards the corners helps to push any stress that may be caused to fingers.

To remove the extra water hidden behind the front, back and lower gasket use a stiff card such as the white.

Teflon card (Gold Card, Red Foot, Conqueror, Contoured Yellow)) cut diagonally in half making a triangle will allow easy access to these tight areas.



16. Rear Passenger Windows: (Tourneo Custom Only)

Do not remove any rubbers or panels. Treat these windows like you would treat large quarter vents. Follow steps 4, 5 and 6 as described above. Place your templated film and apply. Once in position remove excess water and air bubbles.



17. Rear Window Preparation: (Tourneo Custom Only)

Clean the rear window thoroughly, then place the thinner 2 ply film over the rear window. It must be placed in the machine direction of the roll, with the release liner / backing sheet facing outwards.



18. Rear Window Heat Moulding: (Tourneo Custom Only)

Start heat moulding the film using a heat gun on a low heat setting. Ensure that the release liner / backing sheet remains intact. Gently remove all air pockets from the film until the curvature of the film is uniform with that of the window. This film will be moulded on the exterior but fitted on the interior.



19. Rear window trimming: (Tourneo Custom Only)

Gently trim the rear window film to size. Ensure that only stainless-steel blades are used (E.g. Olfa ABS snap-off blades). Try to trim with as little movements as possible. Keep your blade sharp and snap-off where necessary. Trimming on the rear window will help you avoid touching demister lines with your blade.



20. Rear window inside placement: (Tourneo Custom Only):

Remove the release liner as shown in step 9. You might need 2 people for this procedure. Wet the window with slip solution and place the film on the inside of the rear window with the adhesive now facing the window. Once the film is on position, tack the film as shown in step 12.



21. Rear window finishing: (Tourneo Custom Only)

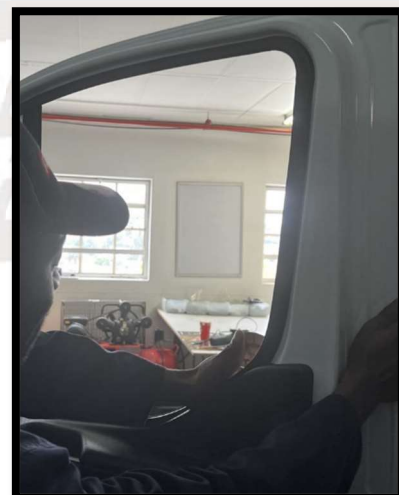
Once the rear window film is on place, remove any air pockets using your hard card and heat gun. Ensure the heat gun is on low heat to prevent damaging interior trim.



22. Final Inspection:

When the installation is complete, ensure all the rubbers are back in their original position.

All windows should be carefully wiped down (inside and out) to remove streaks and smudges making inspection easier. Check for problem areas: a bubble here, a small water pocket there, or a tiny carpet fibre to be heated out along an edge. Special "hard card" squeegees (Pinky or Lil Chizler) can fix most problems, wrapping these tools in a paper towel will help to prevent any possibility of scratching. Adding extra heat to the outside of the glass will help remove minor imperfections. After the wipe-down, take the vehicle outdoors and perform the final visual inspection prior to delivering to the customer.



23. Warranty, Care Instructions and Labels:

Enter the date of fitment. Hang the warranty on the rearview mirror with the certificate and care instructions facing the inside of the vehicle. Place the "Attention" label on all doors. We recommend that the label is placed over the winder buttons. Alternatively, the label can be placed on the lower middle part of the window. Labels are produced with a non-residue adhesive which will not pull off OEM trim paint, and they won't leave an adhesive residue on the window.



Apex Auto Shield (Pty) LTD

www.apexautosshield.co.za | info@apexautosshield.co.za | +27 (0) 21 934 5725